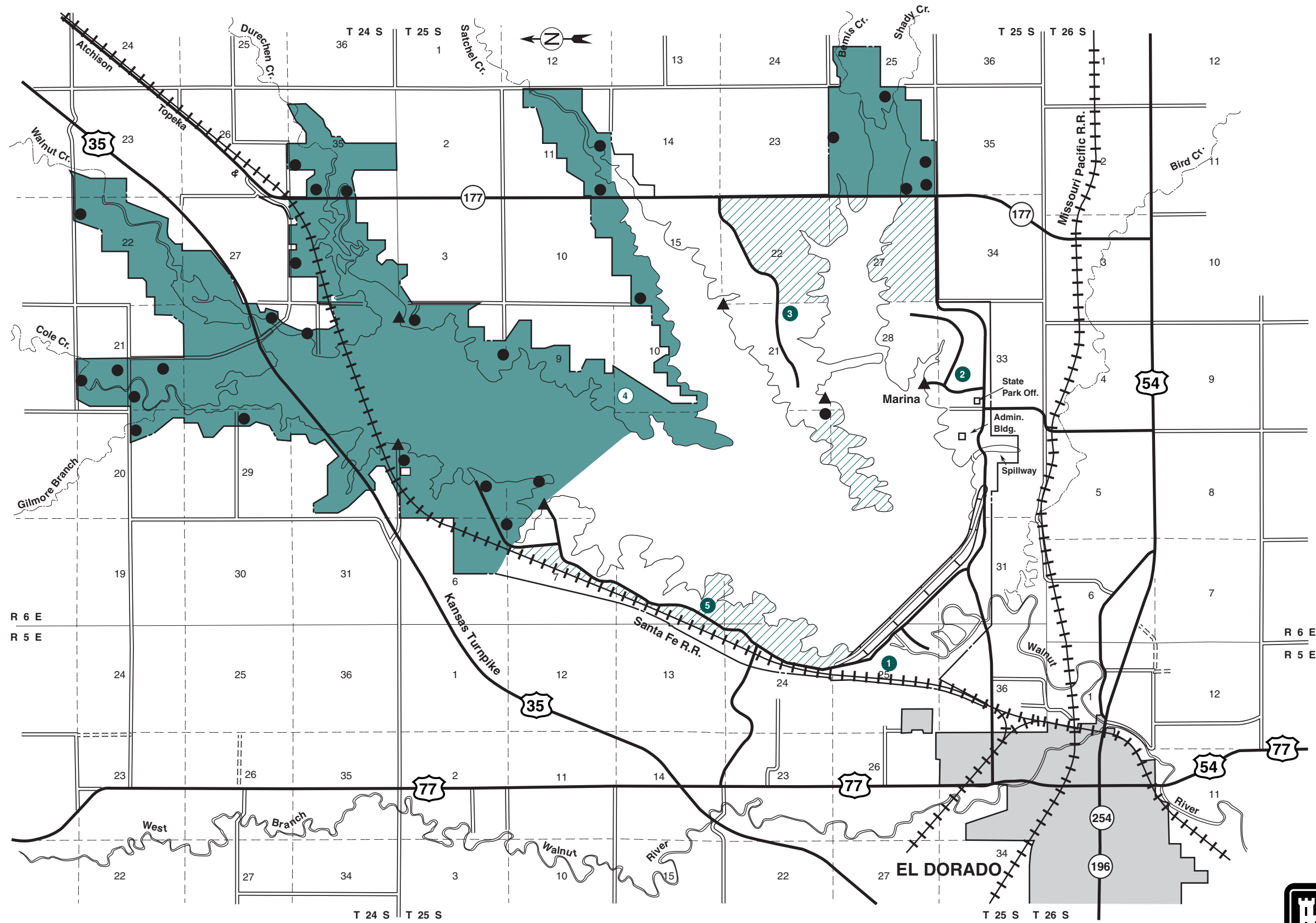


EL DORADO LAKE

PUBLIC HUNTING AREA



PUBLIC USE AREAS

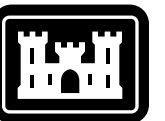
- 1 Walnut River Park
- 2 Shady Creek Park
- 3 Bluestem Point
- 4 Lost Lake Park (CLOSED)
- 5 Boulder Bluff Park

LEGEND

- Paved Road
- Improved Road
- - - - - Dirt Road
- - - - - Project Boundary
- ▲ Boat Ramp/Parking
- Parking Areas
- Corps Areas Open For Hunting
- ▨ Waterfowl and Upland Game



RESERVOIR DATA
 Top of conservation pool El. 1339.0
 98 shoreline miles at El. 1339.0
 Total project land & water acreage 16450



US Army Corps of Engineers
 Tulsa District